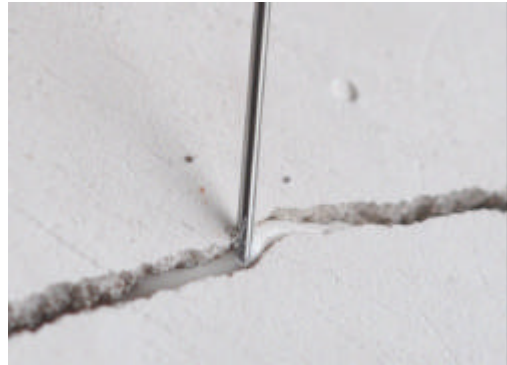




Technical Leaflet

CaLoXiL®-injection grout



Properties

CaLoXiL®-injection grout bases on fine calcium carbonate fillers in combination with CaloSiL®-paste like which acts as binder. All components in the CaLoXiL®-injection grout are characterised by particle sizes smaller than 6 µm. The injection grout has free flowing properties and is able to fill also small voids and fissures. The injection grout is characterised by good stability in combination with high flowability. After hardening, porous masses are formed which demonstrate high capillarity. All masses are hydrophilic and are able to act as capillary-active, zone-bridging mortar surfaces, mortar structures and masonry. Another important property is the good adhesion to historic mortar components. The injection grouts are able to adhere single mortar pieces. Pre-treatment with CaLoSiL® E-25 or other CaLoSiL® types enhances the adhesion of the formed mass to surrounding surfaces and results in an additional structural consolidation.

Typical properties are:

- 36 % porosity
- 4,3 N/mm² compressive strength after 30 days
- 1,1 N/mm² bending strength
- 23 wt.-% water uptake
- 0,4 % shrinkage
- hydrophilic

Packaging

CaLoXiL®-injection grout is available in 250 mL, 500 mL, 1 Liter, 2,5 Liter and 5 Liter containers.

Storage

The injection grout has to be stored between + 5 °C and +30 °C in a tightly closed container. When CaLoXiL®-injection grout remains in unopened, original containers, storage for at least six months is possible. When necessary stir the suspension until a homogenous mass is formed.



**IBZ-Salzchemie
GmbH & Co.KG**

Safety

CaLoXiL®-injection grout reacts strongly alkaline, Avoid spilling, skin and eye contact. Ventilate well, avoid breathing vapours.

Wear safety glasses with side shields, or goggles, at all times while working with lime. Wear gauntlet-type gloves.

Further information concerning safety during transport, storage and handling as well as for disposal and ecology can be found in our latest Material Safety Data Sheet.

Before using in large scale we recommend to treat a small test field with CaLoXiL®-injection grout in order to find out the most favourable application method and the required volumes.

The information mentioned above is state of the art. The application of our products and the work using is beyond the range of our influence. Therefore IBZ-Salzchemie GmbH & Co.KG can take no liability from events that result from the information contained in this leaflet.

IBZ-Salzchemie GmbH & Co.KG

Gewerbepark „Schwarze Kiefern“ • 09633 Halsbrücke, OT Tuttendorf • Tel.: 03731 200155 • Fax: 03731 200156 •
www.ibz-freiberg.de • info@ibz-freiberg.de